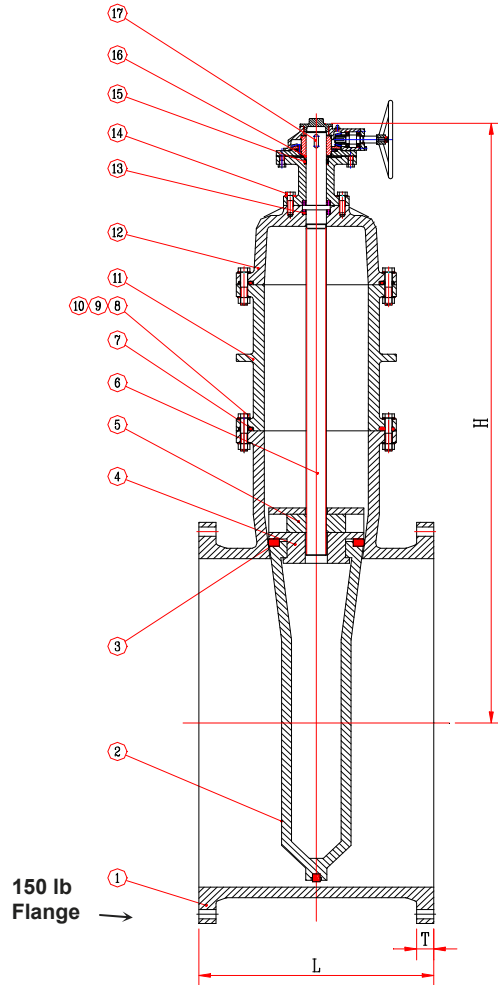


J & S Valve[®] and Manufacturing

Resilient Seated Solid Wedge Gate Valve with Bevel Gear Operator - Series 6800

AWWA C509 & C515 ▪ NRS Type ▪ FL x FL ▪ Sizes 54" - 72"



No.	Part Name	Materials
1	Body	Ductile Iron ASTM A536 65-45-12
2	Wedge	Ductile Iron ASTM A536 65-45-12
3	Rubber Seal	EPDM
4	Pressure Piece	Ductile Iron ASTM A536 65-45-12
5	Stem Nut	Bronze ASTM B62 Low Zinc
6	Stem	Stainless Steel
7	Gasket	EPDM
8	Bolts	Carbon Steel with Zinc Gr. 8.8
9	Nuts	Carbon Steel with Zinc Gr. 8.8
10	Washer	Ductile Iron ASTM A536 65-45-12
11	Bonnet Adapter	Ductile Iron ASTM A536 65-45-12
12	Bonnet	Ductile Iron ASTM A536 65-45-12
13	Bearing	Standard
14	Bolts	Carbon Steel with Zinc Gr. 8.8
15	V-Packing	EPDM
16	Packing Gland	Bronze ASTM B62 Low Zinc
17	Key	Steel

**Note: Spur gear configuration, available.
Gears can be rotated in 90° increments.**

Standard Features:

- Design and Materials Exceed AWWA C509, C515 & C550.
- Flanges Conform to ANSI B16.1, Class 150.
- Ductile Iron: Body, Bonnet, Wedge, and Gland.
- Fusion Bonded Epoxy Coatings ANSINSF61
12 Mils In and Out per AWWA C550.*
- Nuts, Bolts, and Washers.
- Stainless Steel Stem.
- Ductile Iron EPDM Encapsulated Wedge.
- EPDM Gaskets and O-Rings.
- 200 PSI Working Pressure.
- Working Temperature: EPDM 33°F to 248°F.
- 2" AWWA Ductile Iron Nut, Ductile Iron Handwheel
or Automatic Actuators Available.

Dimensions:

Size	Model	L	H	T	Approx. Weight
54"	6854	40"	113"	3"	24,300#
60"	6860	44"	122"	3 1/8"	30,900#
72"	6872	48"	138"	3 1/2"	59,500#